



## Ultra-Lite Standard Features & Lite Value Package

### Interior

- White Vinyl-Clad Ceiling Panels
- Easy-Care Vinyl Wallcovering
- Craft-made Cabinetry w/Hardwood Cabinet Doors, Mortise & Tenon Joints, Designer Drawer & Door Pulls
- High-Performance Vinyl Flooring
- Fabric-Wrapped Box Valances
- Laminated Counterops w/coordinated moulding

### Heating & Cooling

- 16,000 BTU Gas Furnace
- Ducting & Wiring for Value Package Air Conditioning (Ducting N/A 218MB, 248BH)

### Safety

- Wall-Mount Fire Extinguisher
- Combined CO/LP Detector
- Smoke Detector
- Safety Chains

### Electrical

- 30 Amp Service, 45 Amp Converter/Charger
- Cable-Ready Connection
- Central Control Panel

### Furnishings

- Booth-Style Dinette
- Queen Bed & Bedsread
- Privacy Drape(s)
- Mini-Blind for Kitchen Window
- Electric Slide-Out for Sofa & Dinette (257RB, 268BH, 274QB, 279BH, 281BH, 285DB)
- Sofa Slide-Out (238RK)
- Dinette Slide-Out (236RL)

### Appliances

- Power Range Hood w/Light
- Microwave Ready
- 6 cu. ft. 2-Door Dometic Refrigerator/Freezer (218MB, 241RB, 248BH)
- 3-Burner Gas Range (2-Burner in 248BH)

### Bath

- Foot-Flush Toilet
- Power Bath Vent
- Neo-Angle Shower w/Glass Shower Door (218MB, 236RL, 238RK, 241RB, 257RB)
- Skylight over Tub
- Shower Curtain

### Exterior

- Unibody Construction w/steel hurricane straps tying walls to roof and floor
- 4 1/4" x 1/4" Steel Header in Main Slides
- Pass-Thru Storage (most models)
- Diamond Plate lower front
- One-Piece Synthetic Vinyl Roof
- Radius Safety Glass Windows
- (4) 14" Tires/Rims
- 2 x 20 lb. LP Bottle & Cover

### Lite Value Package (included, required)

- Radiant LED Interior Lighting Package
- Electric Awning w/LED Lighting (N/A 218MB, 241RB, 248BH)
- 10.7 cu. ft. Everchill Refrigerator/Freezer (N/A 218MB, 241RB, 248BH)
- Molded Countertops w/Undermount Sink (N/A 218MB, 241RB, 248BH)
- 6 Gal DSI Water Heater
- Front Power Hitch Jack (N/A 248BH)
- Blue Tooth Radio w/2 Inside & 2 Outside Speakers
- Pleated Privacy Shades
- Microwave Oven
- Digital TV Antenna w/Power Booster
- (4) Stabilizer Jacks
- 13,500 BTU Air Conditioner
- Pull-Out Sprayer Faucet (N/A 248BH)
- Swing-Away Grab Handle
- Frosted Glass Window in Entry Door
- Designer Backsplash in Kitchen
- Bath Skylight
- Tech-Ready Upgrades: Wi-Fi-Ready Connections, Solar Panel Prep, Back-Up Camera Hookups, Satellite TV Ready, Multiple USB ports
- Friction Hinge Entry Door
- Tinted Windows
- Upgraded Exterior Graphics
- Radial Tires
- Teddy Bear Bunk Mats (Bunk floor plans)
- Frosted Glass Kitchen Cabinet Doors
- Upgraded Furniture Package

## Ultra-Lite Options

- Spare Tire & Wheel
- Aluminum Wheels
- 3-Burner Range w/Oven & Glass Top
- Battery Disconnect Switch
- Sink Cover (N/A 218MB, 241RB, 248BH)
- SolidStep® Entry Step
- 6 Gal Gas/Electric 110V DSI Water Heater
- 15,000 BTU Air Conditioner
- 6 cu. ft. Two-Way Dometic Refrigerator/Freezer in place of 10.7 cu. ft. 110V Fridge
- Blue Tooth Soundbar in place of Radio (N/A 218MB, 238RK, 241RB, 248BH)
- 1/2 Outside Kitchen (257RB, 274QB, 281BH, 285DB)
- Full Outside Kitchen (279BH)
- Murphy Bed (218MB, 248BH)
- Theater Seating in place of Jack Knife Sofa (236RL, 238RK, 281BH, 285DB)
- Electric Fireplace (281BH, 285DB)
- Outside Hot & Cold Shower
- Tub Surround
- Fiberglass Exterior Walls w/Fender Skirt
- Shower Pan in place of Tub
- Second Swing-Away Grab Handle
- 50-Amp Wiring for 2nd AC (274QB, 279BH, 281BH, 285DB)

**Multi-Year Winner,  
RVDA Quality  
Circle Award**  
for industry-  
leading quality,  
sales, warranty,  
service, and parts



# Ultra-Lite

Travel Trailers by  
Gulf Stream Coach



**Relax - You're Covered!**  
With Our Exclusive Three-Year  
Limited Structural Warranty

In addition to a standard one-year warranty against defects in materials and/or workmanship in construction and original components under normal use, our exclusive Gulf Stream Coach Warranty gives you THREE YEARS of coverage on key structural components (sidewalls, front and rear walls, roof, and floor) of your new Ultra-Lite travel trailer.

In addition, extended protection is offered by many manufacturers that supply components for Ultra-Lite units, including the refrigerator, antenna, furnace, water heater, awning, air conditioner, range, microwave, and more.

See the full warranty statement for details.

Your Gulf Stream Coach Dealer:



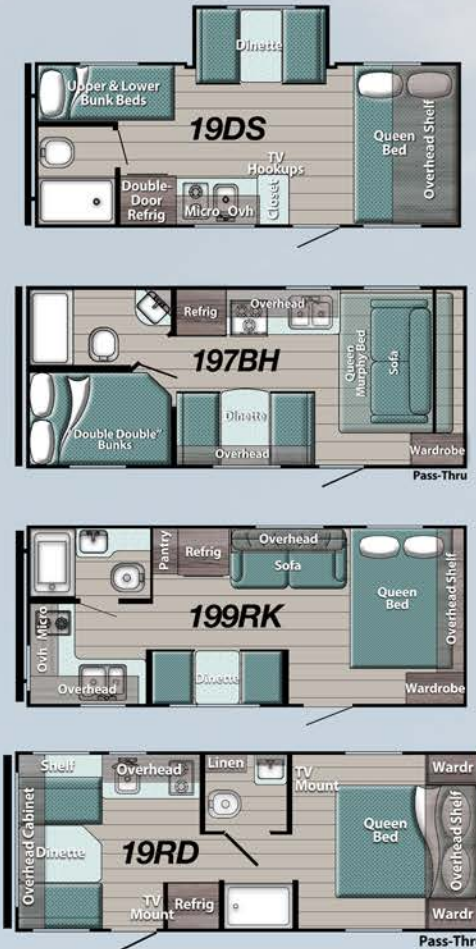
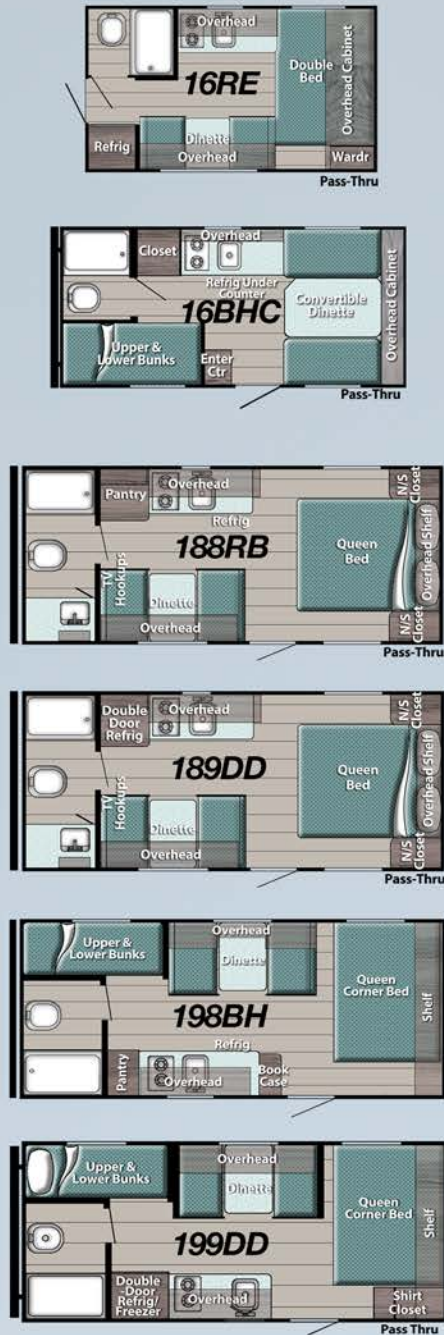
QUALITY • VALUE • INNOVATION

[www.gulfstreamcoach.com](http://www.gulfstreamcoach.com)

503 South Oakland Avenue, Nappanee, IN 46550

# Super Lite From Gulf Stream Coach

## Floor Plans



**GULF STREAM COACH, INC.**

QUALITY • VALUE • INNOVATION

www.gulfstreamcoach.com  
503 S Oakland Ave. • Nappanee, IN 46550

As our most affordable series, Super Lite Travel Trailers have features and floor plans perfect for tight budgets, first-timers, and casual campers.

## Standard Features & Packages

### Standard Features

- High-Performance Vinyl Flooring
- Fabric-Wrapped Box Valances
- Craft-made Cabinetry w/Designer Pulls
- Easy-Care Wall Vinyl
- Laminated Countertops w/Vinyl T-Molding
- White Kitchen Sink
- 30 Amp Svc w/45 Amp Converter/Charger
- Wall-Mount Fire Extinguisher
- Combo CO/LP Detector
- Smoke Detector
- Monitor Panel
- Pleated Shades
- Seamless Synthetic Vinyl Roof
- Diamond Plate Lower Front
- Radius Safety Glass Windows
- Safety Chains
- Single Entry Step

### Convenience Pkg. (req. 16RE, 189DD, 192DS, 197BH, 199RK, 199DD, 19DS, 19RD)

- 6 cu. ft. Double Door Refrigerator
- TV Antenna
- Swing-Away Grab Handle
- Pot & Pan Drawer (189DD, 199RK, 19RD)

### Rocky Mountain Edition (189DD & 199DD only)

- Overslung Axle
- Knobby Tires
- Fender Covers, Wheel Wells
- Double Entry Step
- Aluminum Wheels
- Bottom Diamond Plate Metal

### Camping Pkg. (included)

- 2-Burner Gas Cooktop
- Microwave Oven
- 6-Gal Gas DSI Water Heater
- 13,500 BTU Roof Air Conditioner
- Electric Refrigerator
- 20 lb. LP Gas Tank
- Shower & Toilet
- (2) Rear Stabilizer Jacks
- Power Awning
- Teddy Bear Mattress(es) (Bunk models)
- Wood Ceiling Trim
- 6'8" Interior Height
- High-Rise Kitchen Faucet
- Friction Hinge Entry Door
- Central Control Panel
- Radial Tires
- LED Interior Lights
- 16,000 BTU Furnace
- Multiple USB Ports

### Popular Options

- Blue Tooth Radio w/Int. & Ext. Speakers
- Prep for Solar Panel
- Prep for Backup Camera
- Bedspread
- 6 Gal Gas/Elec 110V DSI Water Heater
- Spare Tire
- Fiberglass Walls
- Double SolidStep® Entry Step
- 3 cu. ft. Gas/Electric Refrig (16BHC)
- 1/2 Outside Kitchen (192DS only)

## Specifications

Specifications are approximate and subject to change. For actual weights, check weight sticker in each unit.

	16RE	16BHC	188RB	189DD	198BH	199DD	19DS	197BH	199RK	19RD	192DS
<b>Length</b>	15'11"	18'10"	20'11"	20'11"	20'11"	20'11"	21'5"	22'2"	22'2"	23'1"	23'2"
<b>Width</b>	90"	84"	96"	96"	96"	96"	84"	96"	96"	96"	96"
<b>Height w/AC</b>	10'3"	10'4"	10'4"	10'4"	10'4"	10'4"	10'4"	10'8"	10'8"	10'8"	11'3"
<b>Int. Height</b>	6'8"	6'8"	6'8"	6'8"	6'8"	6'8"	6'8"	6'8"	6'8"	6'8"	6'8"
<b>Base Weight</b>	2,813	2,612	2,845	2,996	2,675	3,100	2,802	3,663	3,520	3,552	3,580
<b>Hitch Weight</b>	300	360	344	350	350	360	460	638	490	390	390
<b>Net Carry Cap.</b>	1,007	1,268	1,019	854	1,175	760	1,158	1,395	1,370	1,238	1,238
<b>Fresh Water</b>	30	30	30	30	30	30	30	30	30	30	30
<b>Grey Tank</b>	36	36	36	36	36	36	36	36	36	36	36
<b>Black Tank</b>	17	36	36	36	36	36	36	36	36	36	36
<b>Furnace BTUs</b>	16,000	16,000	16,000	16,000	16,000	16,000	16,000	16,000	16,000	16,000	16,000
<b>Water Tank</b>	6 Gal	6 Gal	6 Gal	6 Gal	6 Gal	6 Gal	6 Gal	6 Gal	6 Gal	6 Gal	6 Gal
<b>LP Tank lbs.</b>	20	20	20	20	20	20	20	20	20	20	20

Specifications, materials, and features are subject to change without further notice. Not responsible for typographical errors. Visit www.gulfstreamcoach.com or a local dealer for more information. © Gulf Stream Coach, Nappanee, IN 46550 USA • #SUP12021